



**Sleepy Classes**

Free. Regular. Quality.

---

# **2 Min -series**

*(Foundational topics prerequisite for Civil Services  
For*

**21st  
October  
2021**

---

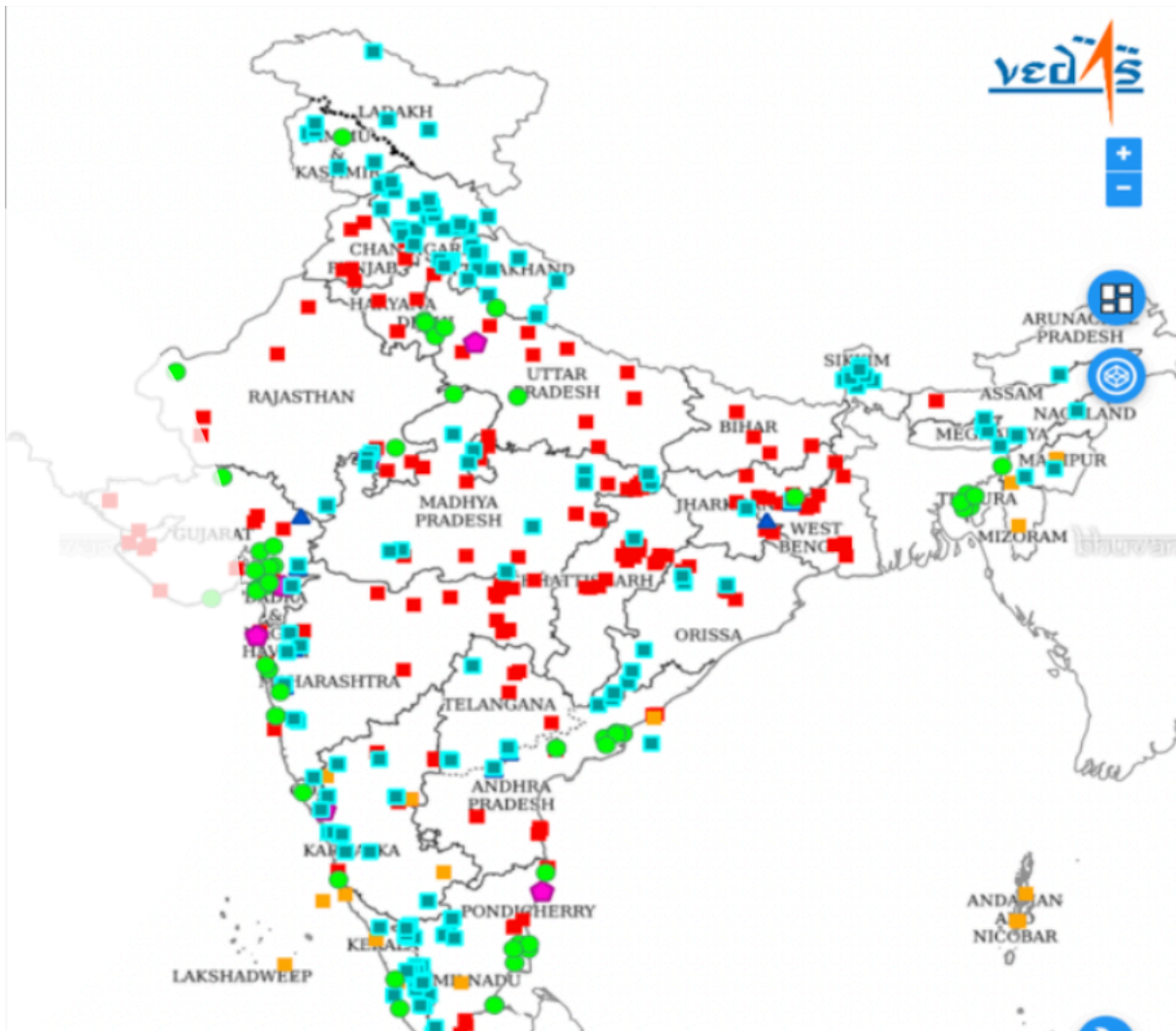
Visit our website [www.sleepyclasses.com](http://www.sleepyclasses.com) or

our [YouTube channel](#) for entire GS Course **FREE** of cost

Also Available: Prelims Crash Course || Prelims Test Series

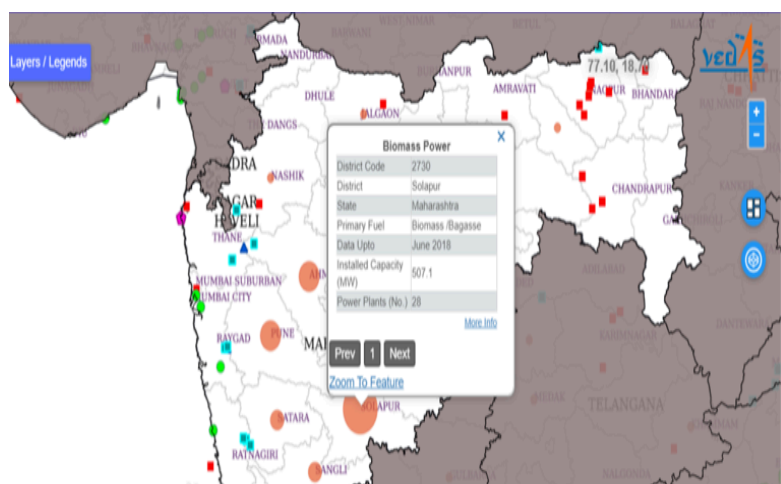
# Economy

## Geospatial Energy Map of India



### What is Geospatial Energy Map of India

- Geospatial energy map attempts to identify and locate all primary and secondary sources of energy and their transportation/transmission networks to provide a comprehensive view of energy production and distribution in India.
- Geographic Information System (GIS) of energy assets will be useful for ensuring integrated planning of energy sector of India, given its large geographical distribution and interdependence.



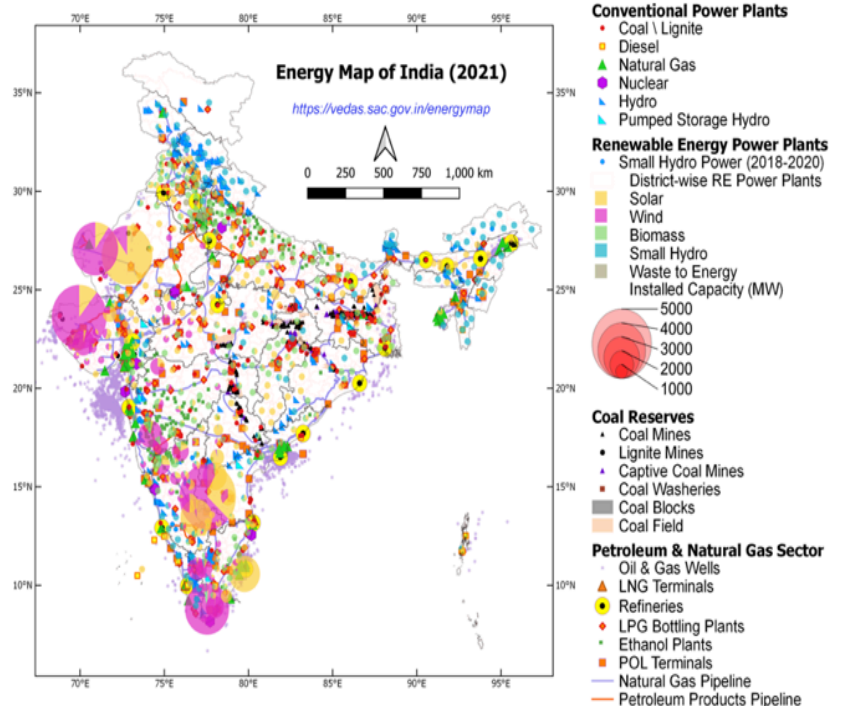
## Why Geospatial Energy Map of India

- The energy data in India is **fragmented and scattered** across multiple organisations.
- While **different ministries** may have detailed **information** and maps, about their respective domain of expertise as per mandate, **there is no consolidated energy map** available in India that may provide a holistic picture of the entire energy sector.
- **Mostly, the available maps are static** (i.e. in PDF or JPG formats), and hence **inhibit integration** with the associated features of topography and other physical infrastructure.



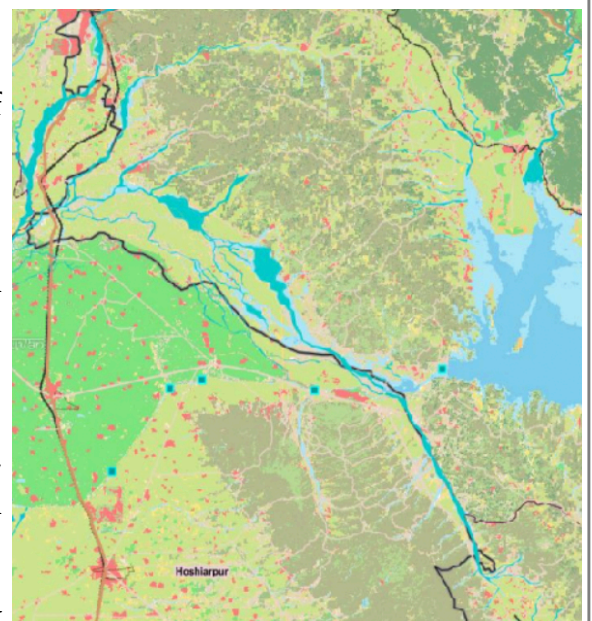
## Information Available on

- The web-based geospatial energy map of India enables visualisation of spatial and non-spatial data on:
  - ✓ Renewable power plants
  - ✓ Non-renewable power plants
  - ✓ Oil and gas downstream sector
  - ✓ Renewable energy potential
  - ✓ Fossil fuel resources
  - ✓ Other energy assets in India.



## Broader Thematic Layers

- The energy map currently provides visualisation of static data of over 25 thematic layers.
- The static data of all types of:
  - **Conventional** power plants, including thermal (coal, diesel and natural gas)
  - Hydro and nuclear power plants
  - Refineries, LNG terminals, LPG bottling plants, POL terminals, oil and gas wells, coal fields, coal blocks
  - **District-wise data on renewable energy** (including solar, wind, small hydro, biomass & waste to energy plants)



- **Renewable energy resource potential** (wind & solar energy) have been organized and published on the energy map.

### **It is deployed on**

- The web-based geospatial energy map of India has been currently **deployed on VEDAS Server at SAC, Ahmedabad.**
- Visualisation of Earth Observation Data and Archival System (VEDAS).
- **SAC** is Space Applications Centre of ISRO.

### **Other Possible Uses**

- The GIS-based energy map of India may be useful for **geospatial planning of resource.**
- It may be used for:
  - ✓ **Infrastructure planning of upcoming solar parks, coal blocks, crude oil and natural gas pipelines.**
  - ✓ **Investment guidance** for financial institutions
  - ✓ **Disaster management of possible energy**
  - ✓ **Disruption and emergency response**
  - ✓ **Safety of energy assets due to harsh climatic conditions**
  - ✓ **This may also help in resource and environmental conservation measures**
  - ✓ **Inter-state coordination on infrastructure planning** including different corridors of energy and transport.